



bizcare

2021 / 2022



A STEP IN THE RIGHT DIRECTION

We're committed to designing and manufacturing ethical and sustainable healthcare attire. At the core of our business is a long-standing commitment to ethical trading. We believe that businesses can be both profitable and responsible.

At Biz Care, we like to think of ourselves as masters of the tiniest details. From sourcing fabrics, to ensuring all our health wear designs are rigorously tested in dedicated laboratories and trialled on real workers to make sure we get the fit and functionality just right. Biz Care garments have been designed to easily coordinate with the Biz Collection range to ensure everything works perfectly together and provides a complete uniform solution.



INNOVATIVE QUALITY IS AT THE HEART OF ALL WE DO

Our experienced team of designers, researchers and technicians are dedicated to sourcing innovative fabrics and processes. Before we release any new product, we perform rigorous testing and evaluation, both in-house and in the workplace.

Our garments are fitted on real people, not mannequins, and we conduct wear trials with customers in the field to guarantee they're fit for purpose, comfort and durability.

MORE CHOICES FOR EVERYBODY

We're the first to recognise that one size doesn't fit all, that's why we offer a vast range of styles, sizes and fabrics to suit all body shapes, industries and functional needs.

We've created products that can be mixed and matched, catering for different work streams, job roles and also allowing each wearer to feel comfortable in their workwear.

FIRST IMPRESSIONS THAT LAST

It's no secret that uniforms are an extension of your brand's image. A good looking uniform not only elevates your brand but also fosters increased morale and productivity. All our stylish pieces have been developed to adhere to and enhance uniform guidelines, providing management with peace of mind.

DELIVERING ON OUR PROMISE OF CARE

With a team of local staff in most states and at the ready to take your call, customer service is a natural extension of everything we do. Our library of fit ranges in some states is available to help you effortlessly conduct fittings and borrow samples easily and efficiently.

Because we hold stock in multiple warehouses across Australia and New Zealand, we can ensure your orders are processed, picked and dispatched quickly and efficiently.

WE BELIEVE IN CORPORATE SOCIAL RESPONSIBILITY

We're proud of our parent company, Fashion Biz's commitment to sourcing products and services in an ethically responsible manner. We consider the welfare of workers, health and safety and potential environmental impacts.

Our Ethical Sourcing Policy is primarily based on conducting business ethically, manufacturing responsibly and demonstrating environmental consciousness.

We choose our partners carefully, with factories across India, China and Bangladesh who must adhere to international manufacturing standards, including:



Ethical Trade Initiative
Base Code (ETI)



Ethically Correct Certified
Company SA 8000



Business Social Compliance
Initiative (BSCI)



Supplier Ethical Data Exchange
(Sedex) ETI/SMETA



Worldwide Responsible Accredited
Production (WRAP)

We're making it a priority to change our product life cycle for the better. That means growing a better future for both our customers and the planet.

02. TEAM DRESSING

18. SHIRTS, T-TOPS & POLOS

28. FUNCTIONAL LOWERS

36. CARE SCRUBS

56. LAB COATS

60. ACCESSORIES

62. HEALTH & BEAUTY

64. KNITWEAR & OUTERWEAR

70. SIZE GUIDE





PURPLE

Modern and eye-catching, our purple adds richness and depth to your wardrobe without being overly vivid. Try pairing with navy, charcoal, black or white.

FEATURED - LEFT TO RIGHT

1. **CS950LS** Purple Daisy Print Florence Tunic, **CL040LL** Black Jane 3/4 Pant
2. **CS947LS** Purple Florence Shirt, **CL956LS** Black Cargo Skirt
3. **CST043MS** Purple Riley Scrub Top, **CSP047ML** Purple Riley Straight Leg Scrub Pant
4. **CST043LS** Purple Riley Scrub Top, **CSP047LL** Purple Riley Straight Leg Scrub Pant
5. **CS948LS** Purple Daisy Print Shirt, **CL956LS** Black Cargo Skirt
6. **CS952LS** Purple Marley T-Top, **CL953LL** Black Slim Leg Pant

NAVY

Navy is a staple colour in any health wardrobe. Best worn with black or navy lowers. Match with other bright colours to create your own contrasting wardrobe options.

FEATURED - LEFT TO RIGHT

1. **NEW CST141MS** Midnight Navy Tokyo Scrub Top, **NEW CSP143ML** Midnight Navy Tokyo Scrub Pant
2. **NEW CST141LS** Midnight Navy Tokyo Scrub Top, **NEW CSP143LL** Midnight Navy Tokyo Scrub Pant
3. **NEW CST148LS** Midnight Navy Space Party Scrub Top, **NEW CSP143LL** Midnight Navy Tokyo Scrub Pant
4. **S770MS** Ink Monaco Shirt, **CL959ML** Navy Cargo Pant
5. **CS947LS** Navy Florence Shirt, **CL953LL** Navy Slim Leg Pant
6. **CS949LS** Navy Florence Tunic, **CL956LS** Navy Skirt
7. **CS949LS** Navy Florence Tunic, **CL955LL** Navy Straight Leg Pant
8. **CST043MS** Midnight Navy Riley Scrub Top, **CSP042ML** Midnight Navy Riley Jogger Scrub Pant
9. **CST043LS** Midnight Navy Riley Stretch Scrub Top, **CSP042LL** Midnight Navy Riley Jogger Scrub Pant









TEAL

Teal matches well with navy, black or charcoal in both lowers and outerwear. Mix and match with our Florence Daisy Print to brighten up your outfit.

FEATURED - LEFT TO RIGHT

1. **SH3603** Teal Oasis Shirt, **CL958ML** Charcoal Flat Front Pant
2. **CK962LC** Charcoal Knit, **CS948LS** Teal Daisy Print Florence Shirt, **CL954LL** Charcoal Cargo Pant
3. **CS950LS** Teal Daisy Print Florence Tunic, **CL953LL** Charcoal Slim Leg Pant
4. **P400LS** Teal Crew Polo, **CL956LS** Charcoal Cargo Skirt
5. **CST043MS** Teal Riley Scrub Top, **CSP047ML** Teal Riley Straight Leg Scrub Pant
6. **CS949LS** Teal Florence Stretch Tunic

MID BLUE

Match with black, navy or charcoal lowers and outerwear. For depth, add a secondary colour palette of white, electric blue or navy that's sure to turn heads.

FEATURED - LEFT TO RIGHT

1. **CS952LS** Mid Blue Marley T-Top, **CL956LS** Black Cargo Skirt
2. **SH3603** Mid Blue Oasis Shirt, **CL958ML** Navy Straight Leg Pant
 3. **CS951LT** Mid Blue Florence 3/4 Shirt, **CK045LC** Navy Cardigan, **CL956LS** Navy Cargo Skirt
4. **CS947LS** Mid Blue Florence Shirt, **CL040LL** Navy Jane Pant
5. **CS949LS** Mid Blue Florence Tunic, **CL041LL** Navy Jane 3/4 Pant
 6. **H10622** Mid Blue Classic Scrub Top, **H10610** Mid Blue Classic Scrub Cargo Pant
 7. **H10612** Mid Blue Classic Scrub Top, **H10610** Mid Blue Classic Scrub Cargo Pant









CHARCOAL

A colour that will go with everything in your wardrobe and complement any skin tone. Add depth to charcoal with contrasting colours of blue, purple or white.

FEATURED - LEFT TO RIGHT

1. **CS947LS** Charcoal Florence Shirt, **CL956LS** Black Cargo Skirt
2. **CS952LS** Charcoal Marley T-Top, **CL953LL** Black Slim Leg Pant
3. **P400LS** Charcoal Crew Polo, **CL953LL** Black Slim Leg Pant
4. **CST945MS** Charcoal Avery V-Neck Scrub Top, **CSP946ML** Charcoal Avery Scrub Pant
5. **CST941LS** Charcoal Avery V-Neck Scrub Top, **CSP944LL** Charcoal Avery Straight Leg Scrub Pant
6. **NEW CST141MS** Charcoal Tokyo Scrub Top, **NEW CSP143ML** Charcoal Tokyo Scrub Pant
7. **NEW CST141LS** Charcoal Tokyo Scrub Top, **NEW CSP143LL** Charcoal Tokyo Scrub Pant
8. **NEW CC144LC** Hope Cropped Lab Coat, **CS952LS** Charcoal Marley T-Top, **CL954LL** Black Cargo Pant

ELECTRIC BLUE

Give your wardrobe a recharge with electric blue. Pair with navy, charcoal or black suiting and outerwear for a striking look. And give depth to your range with our tailored monochrome shirts and polos.

FEATURED - LEFT TO RIGHT

1. **NEW CST141MS** Royal Tokyo Scrub Top, **NEW CSP143ML** Royal Tokyo Scrub Pant
2. **CST043LS** Electric Blue Riley Stretch Scrub Top, **CSP042LL** Electric Blue Riley Jogger Scrub Pant
3. **CST043MS** Electric Blue Riley Scrub Top, **CSP042ML** Electric Blue Riley Jogger Scrub Pant
4. **CS952LS** Electric Blue Marley T-Top, **CL956LS** Charcoal Cargo Skirt
5. **CS949LS** Electric Blue Florence Tunic, **CL953LL** Charcoal Slim Leg Pant
6. **CK961LV** Charcoal Knit Vest, **CS947LS** Electric Blue Florence Shirt, **CL953LL** Charcoal Slim Leg Pant
7. **CST945MS** Electric Blue Avery V-Neck Scrub Top, **CSP946ML** Electric Blue Avery Scrub Pant
8. **CST942LS** Electric Blue Avery Round Neck Scrub Top, **CSP944LL** Electric Blue Avery Straight Leg Scrub Pant









CHERRY

Match with black or navy lowers and outerwear. For depth, add a secondary colour palette of white, blue or black that's sure to turn heads.

FEATURED - LEFT TO RIGHT

1. **P400LS** Red Crew Polo, **CL957LS** Black Cargo Short
2. **P400MS** Red Crew Polo, **CL960MS** Black Cargo Short
3. **CS949LS** Cherry Florence Tunic, **CL954LL** Black Cargo Pant
4. **CS951LT** Cherry Florence Shirt, **CL953LL** Black Slim Leg Pant
5. **CS947LS** Cherry Florence Shirt, **CL955LL** Black Straight Leg Pant
6. **CS952LS** Cherry Marley T-Top

BLACK

Black is a staple in any working wardrobe. Biz Care blacks have been tested to ensure that colorfastness is the least of your worries.

FEATURED - LEFT TO RIGHT

1. **NEW CST141LS** Black Tokyo Scrub Top, **NEW CSP143LL** Black Tokyo Scrub Pant
2. **NEW CC144ML** Hope Longline Lab Coat, **NEW CST043LS** Black Riley Scrub Top, **NEW CSP042LL** Black Riley Jogger Scrub Pant
3. **CST941LS** Black Avery V-Neck Scrub Top, **CSP943LL** Black Avery Slim Leg Scrub Pant
4. **CST942LS** Black Avery Round Neck Scrub Top, **CSP943LL** Black Avery Slim Leg Scrub Pant
5. **NEW CST043LS** Black Riley Scrub Top, **NEW CSP042LL** Black Riley Jogger Scrub Pant
6. **CS952LS** Black Marley T-Top, **CL956LS** Black Cargo Skirt
7. **P400MS** Black Crew Polo, **CL959ML** Black Cargo Pant
8. **CS949LS** Black Florence Tunic, **CL041LL** Black Jane Pant





FLORENCE STRETCH TOPS



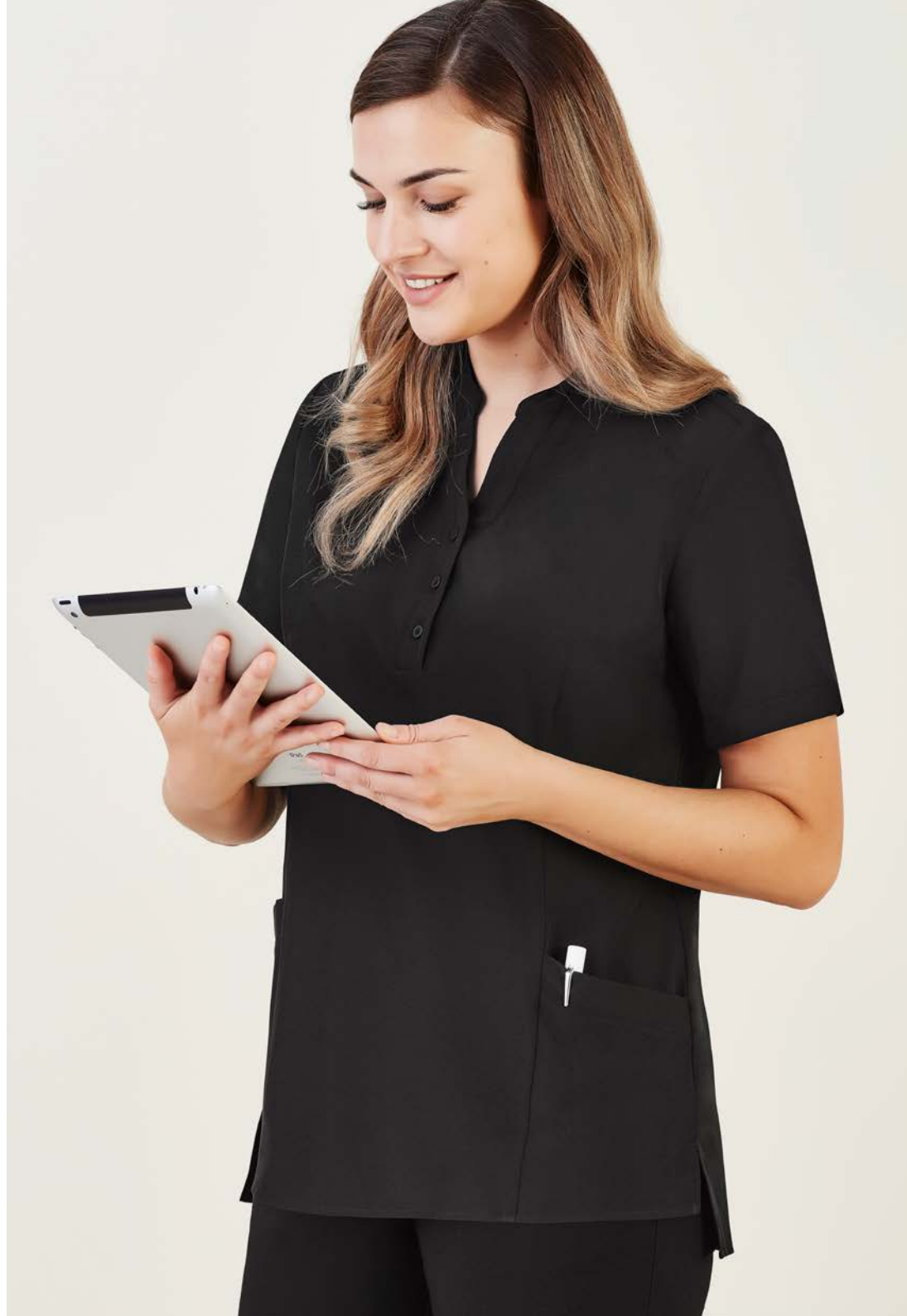
BREATHABLE

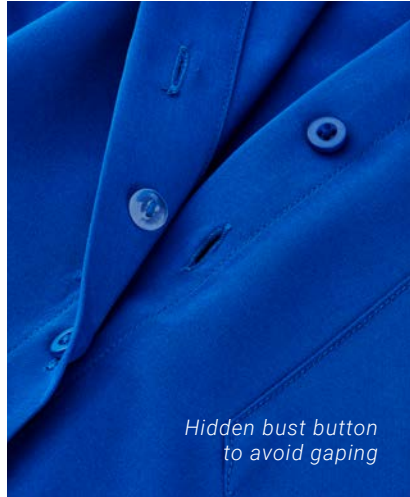


EASY
STRETCH



LIGHT
WEIGHT





- NAVY
- ELECTRIC BLUE
- MID BLUE
- TEAL
- CHERRY
- CHARCOAL
- BLACK
- PURPLE

A perfect blend of style, comfort and function. The easy-care fabric is breathable, soft and lightweight; perfect for all climates. Styles feature longer hem lengths, hidden bust button (short sleeve and ¾ sleeve styles), side splits and pockets.

FABRIC COMPOSITION
CARE INSTRUCTIONS

94% Polyester 6% Elastane
Gentle machine wash. Wash inside out with similar colours.
Do not bleach, soak or tumble dry. Line dry in shade.



CS947LS
Womens
S/S Shirt
4 - 30



CS949LS
Womens
Tunic
4 - 30



CS951LT
Womens
3/4 Shirt
4 - 30



FLORENCE DAISY PRINT STRETCH TOPS



BREATHABLE



EASY
STRETCH



LIGHT
WEIGHT



A perfect blend of style, comfort and function. The easy-care fabric is breathable, soft and lightweight; perfect for all climates. Styles feature longer hem lengths, hidden bust button on short sleeve style, side splits and pockets.

FABRIC COMPOSITION
CARE INSTRUCTIONS

94% Polyester 6% Elastane
Gentle machine wash. Wash inside out with similar colours.
Do not bleach, soak or tumble dry. Line dry in shade.



CS948LS
Womens Daisy
Print S/S Shirt
4 - 30



CS950LS
Womens Daisy
Print Tunic
4 - 30

MARLEY JERSEY T-TOPS



BREATHABLE



EASY
STRETCH



LIGHT
WEIGHT





- NAVY
- ELECTRIC BLUE
- MID BLUE
- TEAL
- CHERRY
- CHARCOAL
- BLACK
- PURPLE

Our easy-care Jersey T-Top is an essential piece in any working wardrobe. The lightweight soft knit provides stretch and comfort without clinging to the body. Designed to complement all silhouettes.

FABRIC COMPOSITION
CARE INSTRUCTIONS

95% Polyester 5% Elastane
Warm gentle machine wash. Wash with similar colours. Do not bleach, soak or tumble dry. Line dry in shade. Little to no pressing required.



CS952LS
Womens
S/S T-Top
XXS - 4XL



BIZ COLLECTION

OASIS SHIRTS

Biz Collection Oasis is ideal for demanding work environments. It's soft, durable and requires little to no ironing. Made from yarn-wicked breathable polyester, providing the same cool and dry features of linen.

FABRIC COMPOSITION
CARE INSTRUCTIONS

BIZ COMFORTCOOL™ 100% Polyester
Cold gentle machine wash. Do not bleach, soak or tumble dry. Line dry in shade.



LB3601
Womens
S/S Shirt
6 - 26



S265LS*
Womens
Overblouse
6 - 30

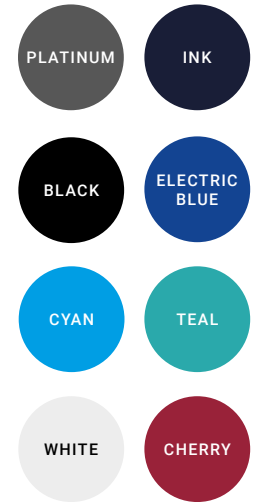


LB3600
Womens
3/4 Shirt
6 - 26



SH3603
Mens
S/S Shirt
S - 3XL, 5XL

*Limited colours available. See the full range of styles and colours available in the Biz Collection catalogue.



BIZ COLLECTION

MONACO SHIRTS

Get that pristine look with this stretch cotton-rich fabric alternative. The Biz Collection Monaco is a functional and comfortable shirt range for demanding healthcare environments.

FABRIC COMPOSITION
CARE INSTRUCTIONS

68% Cotton 28% Polyester 4% Elastane
Cold gentle machine wash. Do not bleach, soak or tumble dry. Line dry in shade.



S770LS
Womens
S/S Shirt
6 - 26



S770LT
Womens
3/4 Shirt
6 - 26



S770MS
Mens
S/S Shirt
XS - 5XL





*L/S style
available in
Black, Navy and
Charcoal only.*



*L/S style
available in
Black, Navy and
Charcoal only.*



BIZ COLLECTION

CREW POLOS

The Biz Collection Crew Polo is easy-care and perfect for all healthcare professionals.

FABRIC COMPOSITION CARE INSTRUCTIONS

65% Polyester 35% Cotton Pique
Machine washable. Line dry in shade.
Do not bleach, soak or tumble dry.
Do not dry clean.



P400LS*
Womens
S/S Polo
8 - 24



P400LL*
Womens
L/S Polo
8 - 24



P400MS
Mens
S/S Polo
8 - 3XL, 5XL



P400ML*
Mens
L/S Polo
8 - 3XL, 5XL

*Limited colours available in P400LS. Long sleeve styles available in Black, Navy and Charcoal only.

BIZ CARE FUNCTIONAL LOWERS

Designed and developed for Care professionals, the Biz Care Functional Lowers range is comfortable, functional and durable.



BREATHABLE



EASY
STRETCH



LIGHT
WEIGHT



CLEVER
STORAGE





Biz Care Functional Lowers are designed, developed, fitted and tested in Australia and New Zealand by real nurses to ensure our range is comfortable, stylish and fit for purpose.

Functional Lowers feature:

- Multiple functional and durable pockets.
- Pockets made from self-fabric to withstand sharp tools, and bar tacked to prevent pocket corners ripping.
- Streamlined pockets provide a clean and tailored appearance, and are less like industrial workwear pockets (cargo pant only).
- Roll-up pant leg option provide the flexibility of a 3/4 leg length (cargo pant only).
- Durable, hard-wearing soft fabric with added stretch for comfort and movement.
- Comfort stretch waistband that moves with you.



CL953LL Womens Comfort Waist Slim Leg Pant



CL955LL Womens Comfort Waist Straight Leg Pant



CL954LL Womens Comfort Waist Cargo Pant

WOMENS COMFORT LOWERS

You'll be impressed with the hard wearing, durable, and easy-care fabric. Made from a lightweight plain weave fabric it's breathable and comfortable, making it perfect for all climates and care roles.

FABRIC COMPOSITION CARE INSTRUCTIONS

64% Polyester 34% Viscose 2% Elastane

Warm gentle machine wash 40°. Wash inside out with similar colours.

Do not bleach, soak or tumble dry. Line dry in shade. Cool iron if required.



NAVY

CHARCOAL

BLACK



CL956LS Womens Comfort Waist Cargo Skirt

CL957LS Womens Comfort Waist Cargo Short

NEW CL145LS Womens Comfort Skort



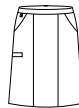
CL953LL
Womens
Slim Leg Pant
4 - 20



CL955LL
Womens
Straight Leg Pant
8 - 30



CL954LL
Womens
Cargo Pant
4 - 30



CL956LS
Womens
Cargo Skirt
4 - 30



CL957LS
Womens
Cargo Short
4 - 26



CL145LS
Womens
Skort
4 - 30
Available in Navy
and Black



CL958ML Mens Comfort Waist Flat Front Pant



CL959ML Mens Comfort Waist Cargo Pant



MENS COMFORT LOWERS

The perfect hard wearing, durable, and easy-care fabric. Made from a lightweight plain weave fabric, it's breathable and comfortable making it perfect for all climates and care roles.

FABRIC COMPOSITION
CARE INSTRUCTIONS

64% Polyester 34% Viscose 2% Elastane
Warm gentle machine wash 40°. Wash inside out with similar colours. Do not bleach, soak or tumble dry. Line dry in shade. Cool iron if required.



CL958ML
Mens Flat
Front Pant
72R - 127R



CL959ML
Mens
Cargo Pant
72R - 127R



CL960MS
Mens
Cargo Short
72R - 127R

JANE LOWERS

The perfect pull-on stretch pant in a lightweight fabric that is durable and comfortable. Quick drying and suitable for all climates. Easy-care, wash-and-wear pant.

Perfect for both functional and office roles.



BREATHABLE



EASY
STRETCH



LIGHT
WEIGHT



QUICK
DRYING





Functional back pocket



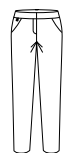
Light weight fabric that is stretchy, durable and comfortable. Wide basque waistband with anti-roll elastic, no zips or buttons, functional back pocket, and two deep front angled pockets with utility loop on right hand side.

FABRIC COMPOSITION
CARE INSTRUCTIONS

88% Polyester 12% Elastane
Warm gentle machine wash 40°.
Wash inside out with similar colours.
Do not bleach, soak or tumble dry.
Line dry in shade. Cool iron if required.



CL040LL
Womens 3/4
Length Stretch Pant
4 - 30



CL041LL
Womens
Stretch Pant
4 - 30

OUR SCRUBS RANGE

Our extensive range of scrubs is designed locally together with medical professionals from a diverse range of Care industries. Ensuring there's a range of scrubs perfectly suited for your team and job functions.

Each scrub range features our core principles of durable fabrics, comfort, easy-care and fit for purpose styling.



NEW

HARTWELL SCRUBS

Unisex reversible scrubs.
Designed to be commercially laundered
and available in sizes XXS - 6XL.
65% Polyester 35% Cotton

See page 38



CLASSIC BIZ SCRUBS™

Biz Collection scrubs. Essential scrub
range available in Unisex and Ladies
styles in a relaxed fit
65% Polyester 35% Cotton

See page 40





NEW

TOKYO SCRUBS

All-rounder scrubs with added antibacterial and odour protection.
Mens and Ladies styles in a modern fit.
60% Cotton 40% Polyester

See page 42



AVERY SCRUBS

Soft, lightweight, wash-and-wear scrubs.
Mens and Ladies scrubs available
in multiple fits and styles.
96% Polyester 4% Elastane

See page 46



RILEY SCRUBS

Stylish and modern scrubs with antibacterial stretch panels. Mens and Ladies scrubs available in multiple fits and styles.
52% Cotton 45% Polyester 3% Elastane

See page 50



NEW

HARTWELL SCRUBS

Unisex reversible scrubs designed specifically for commercial laundromats. Features chest pocket and back pant pocket on both sides of the garment. Colour coded size pips and RFID chip placement suitability. All trims and fabric suitable for most industrial washing processes.



BREATHABLE



EASY
IRON



INDUSTRIAL
WASHING

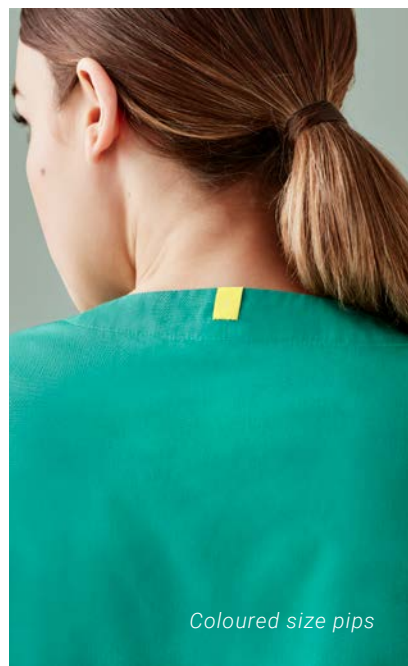


REVERSIBLE



UNISEX





Coloured size pips



RFID chip slot



Full elastic waist
and draw string



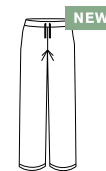
Angled pockets to
reduce lint build up

**FABRIC
COMPOSITION**
65% Polyester
35% Cotton

CARE INSTRUCTIONS
Industrial laundry
friendly. Domestic
laundry at 60°C or
lower. Tumble dry
on low or line dry in
shade. Warm iron
if required.



CST150US
Unisex Reversible
Scrub Top
XXS - 6XL



CSP151UL
Unisex Reversible
Scrub Pant
XXS - 6XL



BIZ COLLECTION

CLASSIC BIZ SCRUBS™

Biz Collection scrubs are made from high performance, soft touch fabric with mechanical stretch.



BREATHABLE



EASY
IRON



INDUSTRIAL
WASHING



FEATURED

1. H10622 Womens Scrub Top
2. H10722 Womens Contrast Top
3. H10622 Womens Scrub Top, H10620 Womens Bootleg Scrub Pant
4. H10612 Unisex Scrub Top, H10610 Unisex Scrub Pant

4.



FABRIC COMPOSITION

65% Polyester 35% Cotton

CARE INSTRUCTIONS

Can be laundered at 80°C.
Do not soak, tumble dry on low, warm iron if needed. Do not dry clean.

CONTRAST SCRUBS



CLASSIC SCRUBS



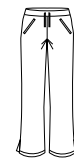
H10622
Womens Classic
Scrub Top
XS - 3XL



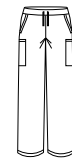
H10722*
Womens Contrast
Crossover Scrub Top
XS - 4XL



H10612
Unisex Classic
Scrub Top
XS - 3XL, 5XL



H10620
Womens Classic
Bootleg Scrub Pant
XXS - 3XL



H10610
Unisex Classic
Scrub Cargo Pant
XS - 3XL, 5XL



NEW

TOKYO SCRUBS

A scrub range that is perfect for every body, every function, every day. Treated with SILVERPLUS®, an antimicrobial technology that provides body odour control*.



BREATHABLE



ANTI
ODOUR



CLEVER
STORAGE



HOT
WASH



ID loop



Functional deep pockets



Functional deep pockets



Coloured size pips for easy sorting

FUNCTIONAL STYLING

Multiple pockets located on the scrub top and scrub pant to hold all your tools. Mens scrub top also has chest pocket. ID badge loop on left side shoulder seam.

PREMIUM FABRIC

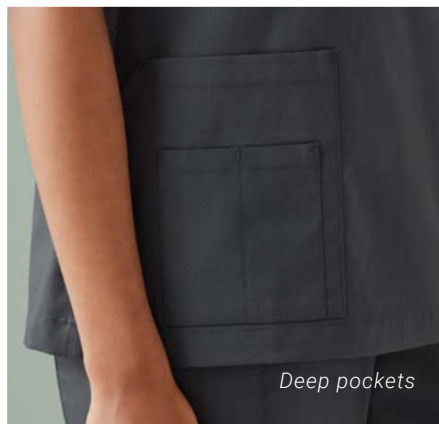
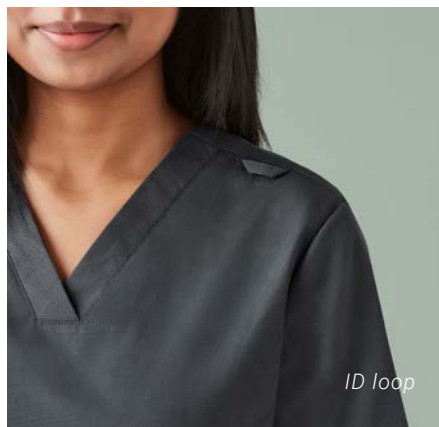
Soft cotton-rich fabric with SILVERPLUS® technology to provide antibacterial protection against odour causing bacteria.

STYLE AND COMFORT

Male and female fits, available in a deep range of sizes. Traditional scrub styles in a slightly tailored fit. Scrub pant with elastic waistband with hidden draw string.

Read more about SILVERPLUS®
www.rudolf.de/en/technology/silverplus/





Form and function come together with our Tokyo range of scrubs. Breathable soft fabric with ample pockets for all your tools.

FABRIC COMPOSITION

60% Cotton 40% Polyester with antibacterial treatment.

CARE INSTRUCTIONS

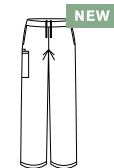
For longevity of antibacterial treatment we recommend domestic laundry at 60°C or lower. Tumble dry on low or line dry in shade. Dry cleanable. Warm Iron.



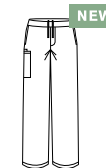
CST141LS
Womens V-Neck
Scrub Top
XXS - 3XL, 5XL



CST141MS
Mens V-Neck
Scrub Top
XXS - 3XL, 5XL



CSP143LL
Womens
Scrub Pant
XXS - 3XL, 5XL



CSP143ML
Mens
Scrub Pant
XXS - 3XL, 5XL



AVERY SCRUBS

Avery scrubs are anything but your typical pair of scrubs! Soft, durable and more comfortable than your favorite pair of pajamas. Avery scrubs are designed with attention to detail; functional, responsive, easy-care and durable. The perfect scrub range for any Care industry.

Available in 6 core colours, multiple fits and an extensive range of sizes.



BREATHABLE



EASY
STRETCH



MOISTURE
WICKING



HOT
WASH



LIGHT
WEIGHT



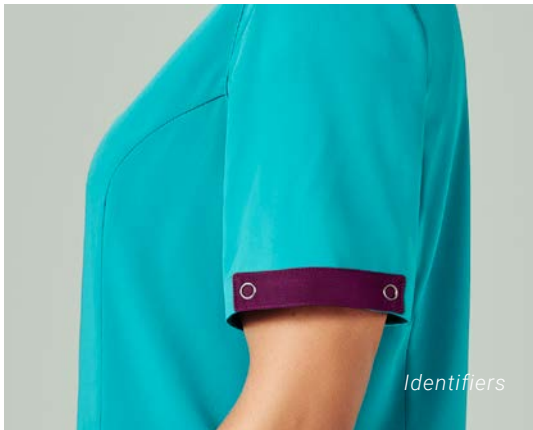
QUICK
DRYING



CLEVER
STORAGE



PET FUR
FRIENDLY



Identifiers



Functional pockets



Utility loops

IDENTIFIERS

Optional tabs attach with press studs for easy identification of streams. Available in 8 colors, see page 61 for more details.

CLEVER POCKETS

Pockets positioned to securely hold all your tools, with bungee loop for keys.

UTILITY LOOPS

Hidden utility loops in both the scrub top and pant to hold your tools in place.



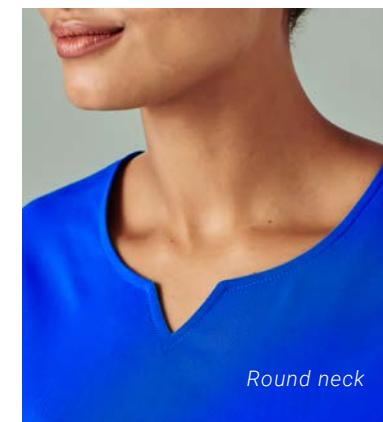
OPPOSITE PAGE - LEFT TO RIGHT

1. CST941LS Womens V-Neck Easy Fit Scrub Top, CSP943LL Womens Multi-Pocket Slim Leg Scrub Pant
2. CST945MS Mens V-neck Scrub Top, CSP946ML Mens Multi-Pocket Scrub Pant

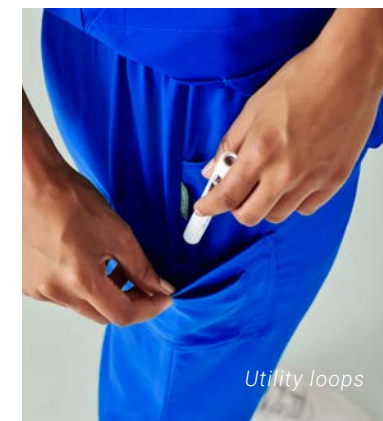


FEATURED - LEFT TO RIGHT

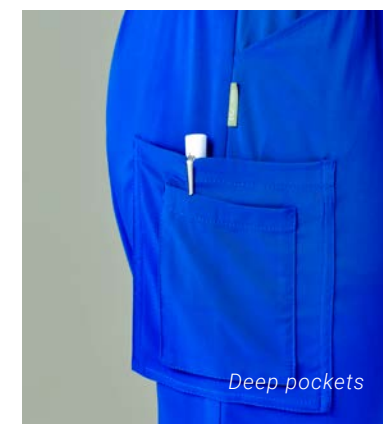
1. CST945MS Mens V-Neck Scrub Top, CSP946ML Mens Multi-Pocket Scrub Pant
2. CST942LS Womens Round Neck Tailored Fit Scrub Top, CSP943LL Womens Multi-Pocket Slim Leg Scrub Pant
3. CST941LS Womens V-Neck Scrub Top, CSP944LL Womens Straight Leg Scrub Pant



Round neck



Utility loops



Deep pockets



FEATURED

4. CST941LS Womens V-Neck Scrub Top, CSP944LL Womens Straight Leg Scrub Pant
5. CST942LS Womens Round Neck Tailored Fit Scrub Top, CSP944LL Womens Straight Leg Scrub Pant
6. CST945MS Mens V-Neck Scrub Top, CSP946ML Mens Scrub Pant



Easy-care, lightweight wash-and-wear performance fabric for the most demanding of environments.

FABRIC COMPOSITION

96% Polyester 4% Elastane

CARE INSTRUCTIONS

Can be washed at 60°C. Do not bleach, soak or tumble dry. Line dry in shade.



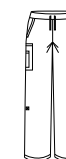
CST941LS
Womens V-Neck
Scrub Top
S - 5XL



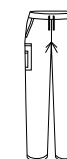
CST942LS
Womens Round
Neck Scrub Top
XXS - 5XL



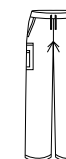
CST945MS
Mens V-Neck
Scrub Top
XS - 5XL



CSP944LL
Womens Straight
Leg Scrub Pant
S - 5XL



CSP943LL
Womens Slim Leg
Scrub Pant
XXS - 3XL



CSP946ML
Mens
Scrub Pant
XS - 5XL



RILEY SCRUBS

Inspired by athleisure and expertly designed for medical professionals to take you through the longest of shifts in comfort. Cotton-rich fabric that feels incredibly soft against the skin, but durable enough for the demands of healthcare.

Riley scrub tops feature antibacterial side stretch panels, multiple pockets and hidden utility loops to hold all your tools in place.

Riley scrub pants have a stretchy yoga knit waistband and are available in a slim leg jogger style and straight leg style to suit all body types.



BREATHABLE



EASY
STRETCH



ANTI
ODOUR



CLEVER
STORAGE



HOT
WASH



Stretch side panel



Yoga waistband



Deep pockets



Jogger cuff

FUNCTIONAL POCKETS

Multiple pockets in the right spots to hold all your tools, with bungee loop for keys and utility loops to hold tools in place.

ACTIVE STRETCH PANELS

Antibacterial stretch side panels for comfort and ease of movement. Plus added protection of odour and bacteria control.

YOGA KNIT WAISTBAND

All Riley lowers have a wide stretch waistband for extra comfort. Secured with internal draw string.

JOGGER CUFFS

Designed with comfort in mind, our jogger style hem provides comfort and function in the most active of health roles.

OPPOSITE PAGE - LEFT TO RIGHT

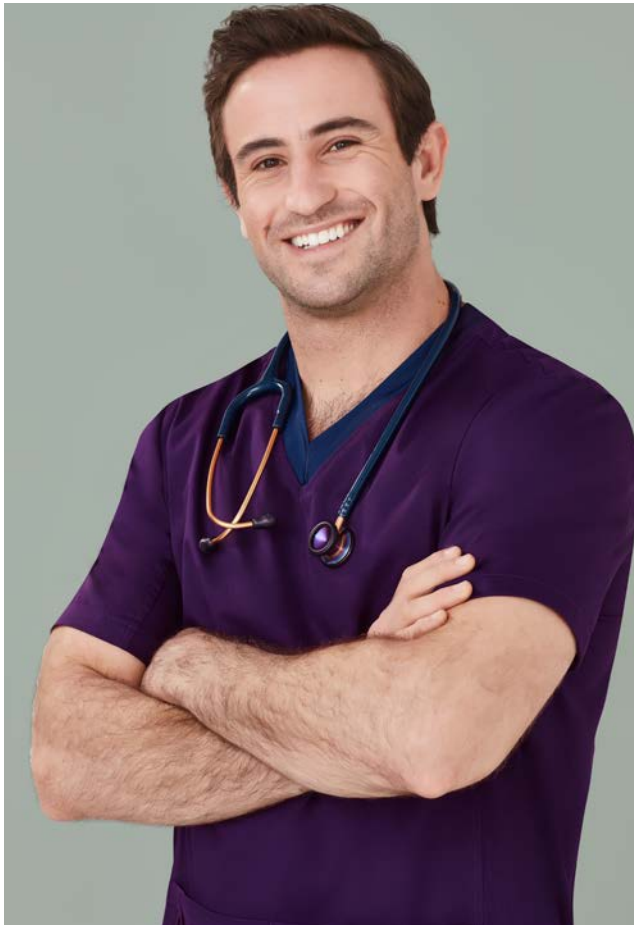
1. CST043LS Womens V-Neck Stretch Scrub Top, CSP047LL Womens Straight Leg Scrub Pant
2. CST043MS Mens V-Neck Stretch Scrub Top, CSP042ML Mens Slim Leg Jogger Scrub Pant



FEATURED

1. CST043LS V-Neck Stretch Scrub Top
CSP047LL Straight Leg Scrub Pant
2. CST043LS V-Neck Stretch Scrub Top
CSP042LL Slim Leg Jogger Scrub Pant
3. CST043MS Mens V-Neck Stretch Scrub Top
CSP042ML Mens Slim Leg Jogger Scrub Pant





Cotton-rich fabric, for breathability and soft hand feel. Scrub tops have antibacterial stretch side panels to provide ease of movement through the waist and arms.

Pants have a Navy knit waistband and draw string for extra comfort and security. Jogger pants have a dyed-to-match knit hem cuff.

FABRIC COMPOSITION

Main: 52% Cotton 45% Polyester 3% Elastane

Stretch panels: 88% Polyester 12% Elastane, with antibacterial treatment.

CARE INSTRUCTIONS

Can be washed at 60°C. Do not bleach or soak. Tumble dry on low or line dry in shade. Dry cleanable. Cool iron body only.

MIDNIGHT
NAVY

ELECTRIC
BLUE

TEAL

PURPLE

NEW
BLACK



CST043LS
Womens V-Neck
Stretch Scrub Top
XXS - 3XL



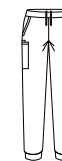
CSP042LL
Womens Slim Leg
Jogger Scrub Pant
XXS - 3XL
Available in Midnight Navy,
Electric Blue and Black only.



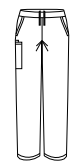
CSP047LL
Womens Straight
Leg Scrub Pant
XXS - 3XL



CST043MS
Mens V-Neck
Stretch Scrub Top
XS - 5XL



CSP042ML
Mens Slim Leg
Jogger Scrub Pant
XS - 5XL
Available in Midnight Navy,
Electric Blue and Black only.



CSP047ML
Mens Straight
Leg Scrub Pant
XS - 5XL



NEW

PRINTED SCRUBS

A classic range of printed scrubs that pair back with any Biz Care lowers. Midnight Navy base with a fun but subtle print to ensure any branding still stands out.

Perfect for Veterinarians, Pediatricians, Early Learning Educators and anyone else looking to add some fun to their Care wardrobe.



BREATHABLE



EASY
IRON



CLEVER
STORAGE



WARM
WASH



PET FUR
FRIENDLY



MIDNIGHT
NAVY
(BASE)

A perfect blend of style, comfort and function. Our 100% cotton fabric is breathable, soft and lightweight; perfect for all climates. Styles feature side splits, 2 front pockets and a chest pocket on mens styles. Relaxed Fit.

FABRIC COMPOSITION
CARE INSTRUCTIONS

100% Cotton
Gentle machine wash. Wash inside out with similar colours.
Do not bleach or soak. Tumble dry on low or line dry in shade.



CST147LS
Best Friends
Womens Scrub Top
XXS - 3XL, 5XL



CST147MS
Best Friends
Mens Scrub Top
XS - 3XL, 5XL



CST148LS
Space Party
Womens Scrub Top
XXS - 3XL, 5XL



CST148MS
Space Party
Mens Scrub Top
XS - 3XL, 5XL

NEW

HOPE LAB COATS

Functional and comfortable lab coats in a modern tailored fit. Soft and luxurious fabric treated with Teflon® Stain Release. Lab coats don't have to be boring!

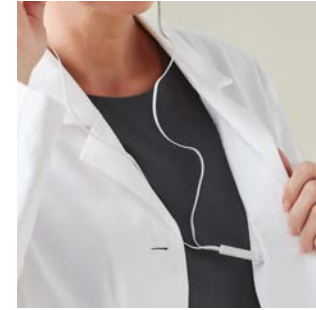
FABRIC COMPOSITION

65% Polyester 35% Cotton
with Teflon® Stain Release

CARE INSTRUCTIONS

Machine washable.
For optimum results
wash warm at 40°C.
Can be dry cleaned.



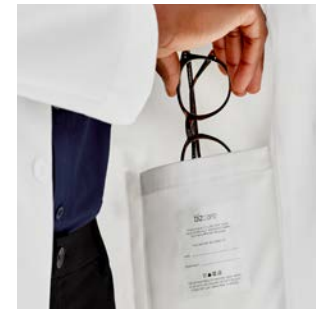


WHITE



NEW

CC144MC
Hope Mens
Cropped Lab Coat
XS - 3XL



NEW

CC144LC
Hope Womens
Cropped Lab Coat
XS - 2XL




NEW

CC144ML
Hope Mens
Longline Lab Coat
XS - 3XL

NEW

CC144LL
Hope Womens
Longline Lab Coat
XS - 2XL

 BIZ COLLECTION

UNISEX LAB COATS

Biz Collection unisex lab coats are made from easy-care performance fabric in a durable cotton twill. Mechanical stretch to provide extra comfort.

FABRIC COMPOSITION

65% Polyester 35% Cotton Twill

CARE INSTRUCTIONS

Easy-care. Machine wash-and-wear.





WHITE



H132ML
Unisex
Lab Coat
XS - 3XL, 5XL



NEW

HAPPY FEET

Add a PEP to YOUR STEP with our everyday comfort socks, perfect for those on their feet or sitting down all day.

FABRIC COMPOSITION

41% Cotton 28% Nylon
26% Polyester 5% Elastane

CARE INSTRUCTIONS

Warm machine wash inside out.



CCS149U
Unisex
Comfort Socks
S, M, L



ELECTRIC
BLUE

MID BLUE

TEAL

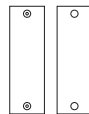
CHERRY

GRAPE

CYAN

FUCHSIA

LIME
GREEN



CID940U
Scrub Identifier
One Size

AVERY IDENTIFIERS

Identifiers are the perfect way to differentiate streams and job roles without having the team in different coloured scrubs. Identifiers easily snap onto the hidden press studs on the scrub sleeve. A small monogram is also possible on the identifier.

FABRIC COMPOSITION

96% Polyester 4% Elastane
with metal press studs



NATURAL

BIZ CARE TOTE

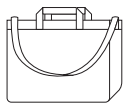
The perfect work bag or shopping tote. Inside pocket, metal clip for keys, removable hard base and attached short and long handles.

FABRIC COMPOSITION

100% Recycled Canvas Cotton

CARE INSTRUCTIONS

Gentle machine or hand wash.
Remove base before washing.



CA044U
Tote Bag
One Size



BLACK

WHITE

BLACK/
WHITE

 BIZ COLLECTION

ZEN TUNIC

Biz Collection Zen tunic, with Teflon® stain release stretch fabric allows for easy-care. Semi fitted style with side splits and long hemline.

FABRIC COMPOSITION CARE INSTRUCTIONS

97% Polyester 3% Elastane
Easy-care. Machine wash-
and-wear.



H134LS
Womens
Zen Tunic
6 - 20



BLACK

WHITE

BLACK/
MAGENTA

 BIZ COLLECTION

BLISS TUNIC

Biz Collection Bliss tunic, with Teflon® stain release stretch fabric allows for easy-care. Semi fitted style with deep side splits, longer length vented sleeves, 2 way zip with nickle free diamantè and 2 front pockets.

FABRIC COMPOSITION

Black: 97% Polyester 3% Elastane
White: 70% Polyester 25% Rayon
5% Elastane

CARE INSTRUCTIONS

Easy-care. Machine wash-
and-wear.



H632L
Womens
Bliss Tunic
6 - 20



BLACK

WHITE

 BIZ COLLECTION

EDEN TUNIC

Biz Collection Eden tunic, with Teflon® for easy-care. Two lower front pockets, longer hem line, semi-fitted, side splits and center back action-back pleat.

FABRIC COMPOSITION
CARE INSTRUCTIONS

97% Polyester 3% Elastane
Easy-care. Machine wash-and-wear.



H133LS
Womens
Eden Tunic
6 - 20



BLACK

GREY
MARLE

NATURAL

 BIZ COLLECTION

SPA TUNIC

Biz Collection Spa tunic comes in a stretch fabric with linen-like appearance. Dupont™ Teflon® stain release function, asymmetrical mock-wrap front, with invisible centre back zip and deep side splits.

FABRIC COMPOSITION
CARE INSTRUCTIONS

97% Polyester 3% Elastane
Easy-care. Machine wash-and-wear.



H630L
Womens
Spa Tunic
6 - 20

KNITWEAR / OUTERWEAR





KNITWEAR

Designed for functional roles, Biz Care knits provide warmth, durability and a soft hand feel. With longer hem lengths to provide extra coverage.

FABRIC COMPOSITION

60% Acrylic 40% Merino Wool

CARE INSTRUCTIONS

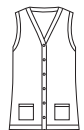
Warm gentle machine wash with wool approved detergent.



CK045LC
Womens Button
Front Knit Cardigan
XXS - 4XL



CK962LC
Womens Zip
Front S/S Knit
XXS - 4XL



CK961LV
Womens Button
Front Knit Vest
XXS - 4XL

NAVY

CHARCOAL

BLACK

 BIZ COLLECTION

2-WAY ZIP CARDIGAN

The perfect blend for those after a non-wool alternative. 2-way zip allows for multiple styling options.

FABRIC COMPOSITION

73% Viscose 27% Nylon

CARE INSTRUCTIONS

Machine washable.



LC3505
Womens 2 Way
Zip Cardigan
S - 4XL



See the full range of outerwear and knitwear styles available in the Biz Collection catalogue.

NAVY

CHARCOAL

BLACK

BIZ COLLECTION

MILANO VEST

Easy-care, 12-gauge wool blend knits are perfect for keeping you warm in the cooler climates or working in an air-conditioned environment.

FABRIC COMPOSITION

50% Pre-Shrunk Wool 50% Acrylic

CARE INSTRUCTIONS

Machine washable.



LV619L
Womens
Milano Vest
XS - 3XL



WV619M
Mens
Milano Vest
XS - 3XL, 5XL



See the full range of outerwear and knitwear styles available in the Biz Collection catalogue.



BIZ COLLECTION

GENEVA

Geneva Softshell Jacket with breathable membrane offers wind and water repellent protection. Lined with ribbed fleece with lightweight warmth and comfort.

FABRIC COMPOSITION

BIZTECH™ 100% Polyester

CARE INSTRUCTIONS

Machine washable.



J307L
Womens
Geneva Jacket
S - 2XL



J404L
Womens
Geneva Vest
S - 2XL



J307M
Mens
Geneva Jacket
S - 3XL, 5XL



J404M
Mens
Geneva Vest
S - 3XL, 5XL



See the full range of outerwear and knitwear styles available in the Biz Collection catalogue.

NAVY

BLACK

BIZ COLLECTION

MICRO FLEECE

The essential micro-fleece jacket and vest range is low-pilling with 2 side zip pockets.

FABRIC COMPOSITION

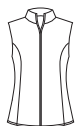
100% Polyester

CARE INSTRUCTIONS

Machine washable.



PF631
Womens
Fleece Jacket
8 - 24



PF905
Womens
Fleece Vest
8 - 24



PF630
Mens
Fleece Jacket
XS - 3XL, 5XL



F233MN
Mens
Fleece Vest
XS - 3XL, 5XL

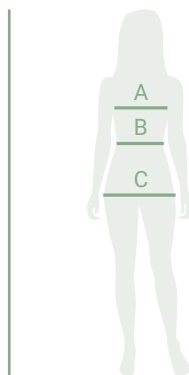


See the full range of outerwear and knitwear styles available in the Biz Collection catalogue.

WOMENS SIZE GUIDE

Biz Care apparel sizes are designed to fit average industry standards for the below body measurements. Please use this handy Body Measurement Guide to compare your own measurements and help you determine which size to order.

Use these measurements as a guide when selecting the right size garment, but also take into consideration the garment fit.



A. BUST - Measure under your arms and across shoulder blades, around the fullest part of your bust.

B. WAIST - Measure around your natural waistline. This is the smallest part of your waist.

C. HIP - Measure around fullest part of your hips (about 20 - 24 cm down from waist) while standing naturally.

PANT AND SKIRT LENGTHS - Pants and skirts will vary in length depending on the height of each individual and also their shape. Most pants come with a hem allowance for easy alterations.

Women's Shirts, Scrub Tops, Knitwear and Outerwear

| | | XXS | XS | XS-S | S | M | L | L-XL | XL | 2XL | 3XL | 4XL | 5XL | | |
|-------|----|-----------|-----------|-----------|-----------|-----------|-----------|-----------|---------|-----------|-----------|-----------|---------|---------|-----------|
| AU/NZ | | 4 | 6 | 8 | 10 | 12 | 14 | 16 | 18 | 20 | 22 | 24 | 26 | 28 | 30 |
| Bust | cm | 75-77 | 78-82 | 83-87 | 88-92 | 93-97 | 98-102 | 103-108 | 109-114 | 115-119 | 120-124 | 125-129 | 130-134 | 135-139 | 140-144 |
| | in | 29.5-30.3 | 30.7-32.3 | 32.6-34.2 | 34.6-36.2 | 36.6-38.2 | 38.6-40.2 | 40.6-42.5 | 43-44.9 | 45.3-46.9 | 47.2-48.8 | 49.2-50.8 | 51.2-52 | 53-54.7 | 55.1-56.7 |

Women's Pants, Scrub Pants and Skirts

| | | XXS | XS | XS-S | S | M | L | L-XL | XL | XL-2XL | 2XL-3XL | 3XL-4XL | 4XL | 5XL | |
|-------|----|-----------|-----------|-----------|-----------|-----------|-----------|-------------|------------|-----------|-----------|-----------|-----------|-----------|-----------|
| AU/NZ | | 4 | 6 | 8 | 10 | 12 | 14 | 16 | 18 | 20 | 22 | 24 | 26 | 28 | 30 |
| Waist | cm | 57-59 | 60-64 | 65-69 | 70-74 | 75-79 | 80-84 | 85-90 | 91-96 | 97-101 | 102-106 | 107-111 | 112-116 | 117-121 | 122-126 |
| | in | 22.4-23.2 | 23.6-25.2 | 25.6-27.2 | 27.5-29.1 | 29.5-31.1 | 31.5-33.1 | 33.5 - 35.4 | 35.8-37.8 | 38.1-39.8 | 40.2-41.7 | 42.1-43.7 | 44.1-45.7 | 46.1-47.6 | 48-49.6 |
| Hip | cm | 84-86 | 87-91 | 92-96 | 97-101 | 102-106 | 107-111 | 112-117 | 118-123 | 124-128 | 129-133 | 134-138 | 139-143 | 144-148 | 149-153 |
| | in | 33.1-33.9 | 34.2-35.8 | 36.2-37.8 | 38.1-39 | 40.1-41.7 | 42.1-43.7 | 44.1-46.1 | 46.5 -48.4 | 48.8-50.4 | 50.7-52.4 | 52.7-54.3 | 54.7-56.3 | 56.7-58.3 | 58.7-60.2 |

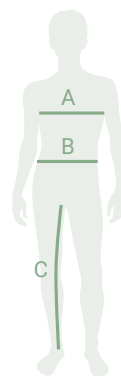
All measurements provided are approximate body measurements and for reference only. Actual sizing may vary according to the style and fit of the garment.

Not all styles are available in all sizes, please refer to product pages for available sizing.

MENS SIZE GUIDE

Biz Care apparel sizes are designed to fit average industry standards for the below body measurements. Please use this handy Body Measurement Guide to compare your own measurements and help you determine which size to order.

Use these measurements as a guide when selecting the right size garment, but also take into consideration the garment fit.



A. CHEST - Measure under your arms and across shoulder blades, around the fullest part of your chest. Hold one finger between body and tape.

B. WAIST - Measure around your natural waistline while holding one finger between body and tape. Measure over shirt at position your pants would normally sit.

C. IN SEAM - Measure from the crotch seam to the bottom of the inside leg of a well-fitting pair of pants.

PANT LENGTHS - Pants will vary in length depending on the height of each individual and also their shape. Most pants come with a hem allowance for easy alterations.

Men's Shirts, Polos, Knitwear and Outerwear

| Chest | cm | 87 | 92 | 97 | 102 | 107 | 112 | 117 | 122 | 127 | 132 | 137 |
|------------------------|----|----|----|----|-----|-----|-----|-----|-----|-----|-----|-----|
| | in | 34 | 36 | 38 | 40 | 42 | 44 | 46 | 48 | 50 | 52 | 54 |
| Shirts and Polos | | | XS | S | M | L | XL | 2XL | 3XL | 4XL | 5XL | |
| Knitwear and Outerwear | | | XS | S | M | L | XL | 2XL | 3XL | 4XL | 5XL | |

Men's Scrub Tops and Lab Coat

| | | | | | | | | | | | | |
|-------------------|----|----|----|----|-----|-----|-----|---------|-----|-----|-----|-----|
| Chest | cm | 87 | 92 | 97 | 102 | 107 | 112 | 117 | 122 | 127 | 132 | 137 |
| | in | 34 | 36 | 38 | 40 | 42 | 44 | 46 | 48 | 50 | 52 | 54 |
| Men's Scrub Tops | | | XS | S | M | L | XL | XL -2XL | 3XL | 4XL | 5XL | |
| Unisex Scrub Tops | | | XS | S | M | L | XL | 2XL | 3XL | | 5XL | |
| Unisex Lab Coat | | | XS | S | M | L | XL | 2XL | 3XL | | 5XL | |

Men's Pants, Shorts and Scrub Pants

| Waist | cm | 72 | 77 | 82 | 87 | 92 | 97 | 102 | 107 | 112 | 117 | 122 | 127 |
|-------------------------------|----|----|----|----|----|----|----|-----|-----|-----|-----|-----|-----|
| | in | 28 | 30 | 32 | 34 | 36 | 38 | 40 | 42 | 44 | 46 | 48 | 50 |
| Biz Care Comfort Waist Lowers | | 72 | 77 | 82 | 87 | 92 | 97 | 102 | 107 | 112 | 117 | 122 | 127 |
| Men's Scrub Pants | | | XS | S | M | L | XL | 2XL | 3XL | 4XL | | 5XL | |
| Unisex Scrub Pants | | | XS | S | M | L | XL | 2XL | 3XL | | 5XL | | |

This catalogue has been compiled and presented with due care and is considered to be true and correct at the time of publication. Colours are reproduced as closely as possible, but may differ slightly from actual products due to printing processes and paper composition. Please refer to www.biz-care.com for the latest up-to-date products and information.

BIZ CARE / CARES FOR ALL

It is no secret that the healthcare industry is booming. Biz Care understands that the healthcare industry is made up of more than just public and private hospitals. As such, we offer a comprehensive range of attire to suit an array of CARE industries as well as supporting related services. The Biz Care healthwear range is also designed to extend into various work streams and job roles within any sized clinic or practice.

- Medical Clinics & Dental Services
- Optometry
- Physiotherapy
- Chiropractic
- Aged Care, Out-Patient & Remedial Services
- Pharmaceutical
- Research Labs
- Medical Schools
- Veterinary
- Beauty Therapists & Clinics
- Cosmeceutical Industry
- Transport Services
- Early Learning Centres
- Pathology & Diagnostic Imaging Services
- Hygiene, Cleaning & Housekeeping Services
- And so much more...





WHY CHOOSE BIZ CARE?

At Biz Care, we like to think of ourselves as masters of the finest details. All of our healthwear is rigorously tested in our own dedicated laboratories. We trial our designs on real health workers to ensure they are fit for purpose.

By combining on-trend design, comfort and performance, we're proud to produce apparel that suits everybody in every industry by offering a range of contemporary styles, colours and silhouettes to match.

INTER-BRAND COMPATIBILITY

Biz Care has been designed to coordinate easily with key styles and colours from the Biz Collection range.

LOCAL EXPERTS

Our team of dedicated in-house experts work together across our Auckland and Melbourne offices. Biz Care make products that are suitable for all body shapes and sizes with materials that cater for our local climates and job functions.

SAY NO TO FAST FASHION

We create considered ranges that are always on-trend and last well beyond typically seasonal trends. Our ranges are active and stocked for a minimum of 3 - 5 years. Which is better for you and the environment.

SHOP LOCAL / SUPPORT LOCAL

Biz Care is proudly sold through a network of over 4000 locally owned and operated businesses. Supporting thousands of employees across Australia and New Zealand.



bizcare

WWW.JEMPP.COM.AU

WANT MORE
INFORMATION ON HOW
BIZ CARE CAN DRESS
YOUR CARE INDUSTRY?

ENQUIRE WITH YOUR
BIZ CARE BRAND
EXPERT TODAY!



bizcare

WWW.JEMPP.COM.AU

THANK YOU ♥ FOR CARING

